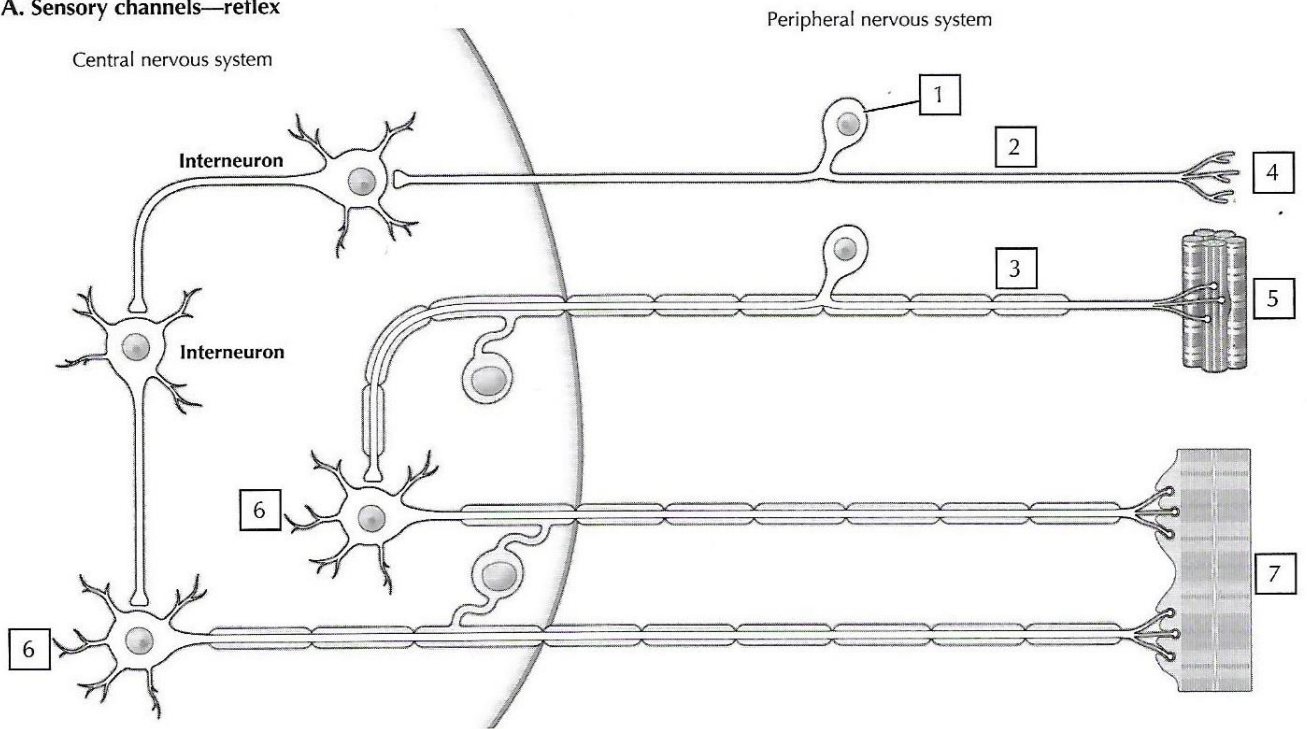
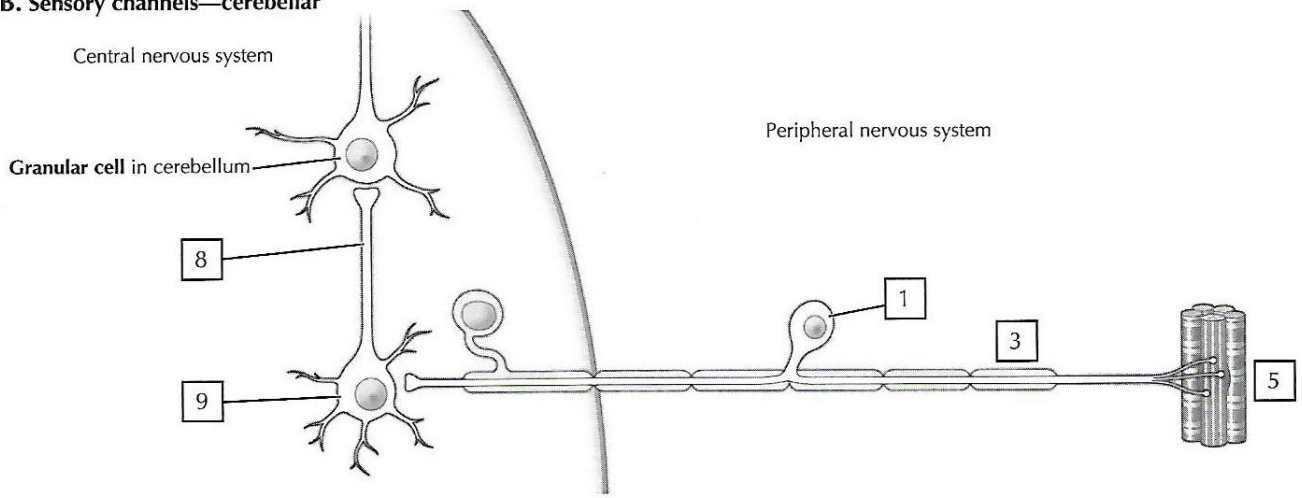


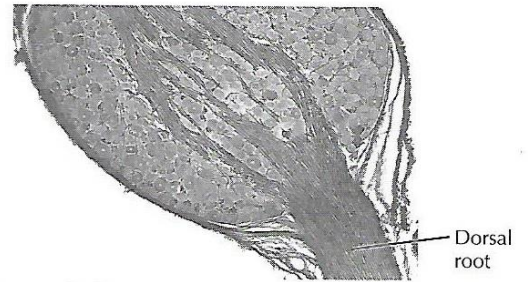
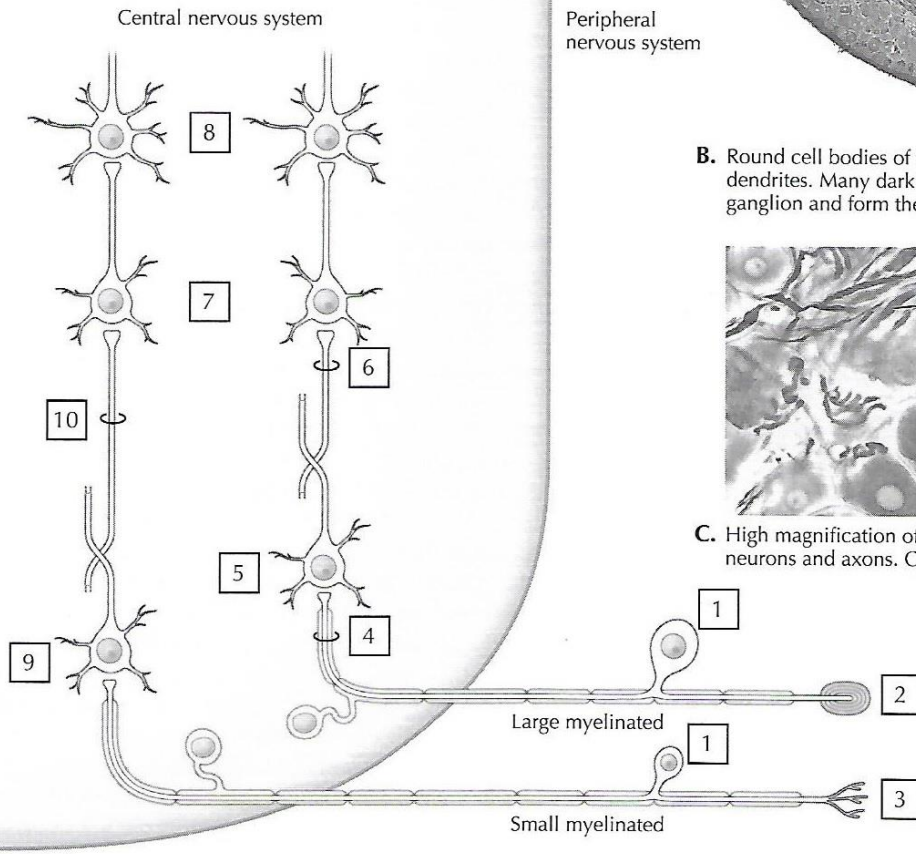
A. Sensory channels—reflex



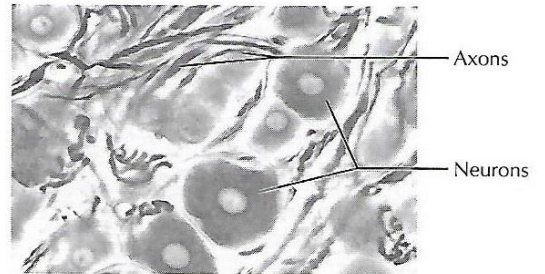
B. Sensory channels—cerebellar



A. Sensory channels—lemniscal

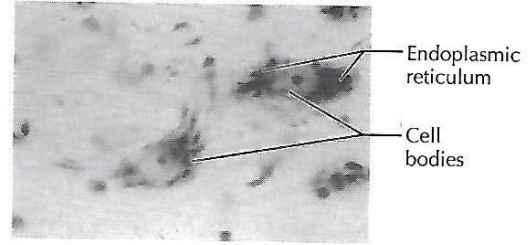
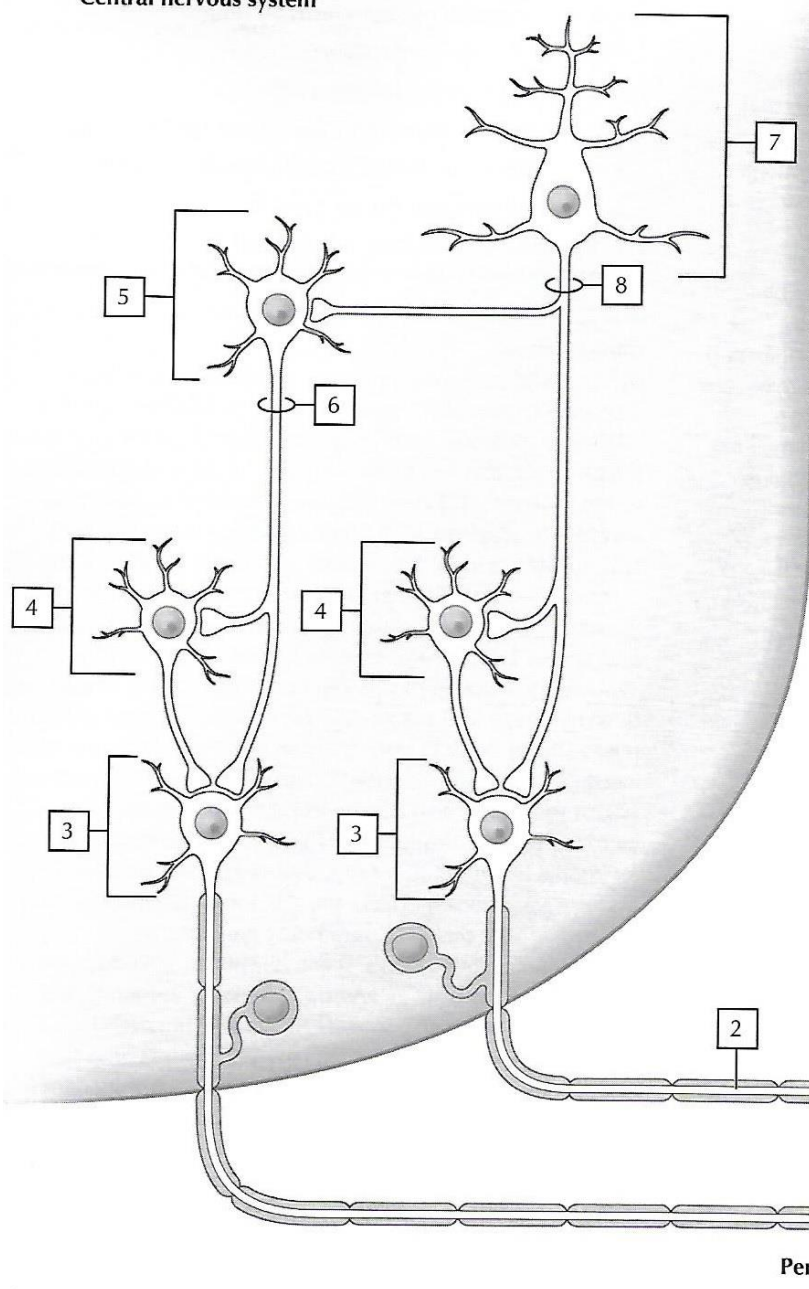


B. Round cell bodies of the dorsal root ganglion, devoid of dendrites. Many darkly stained axons course through the ganglion and form the dorsal root. Cajal stain (fiber stain).

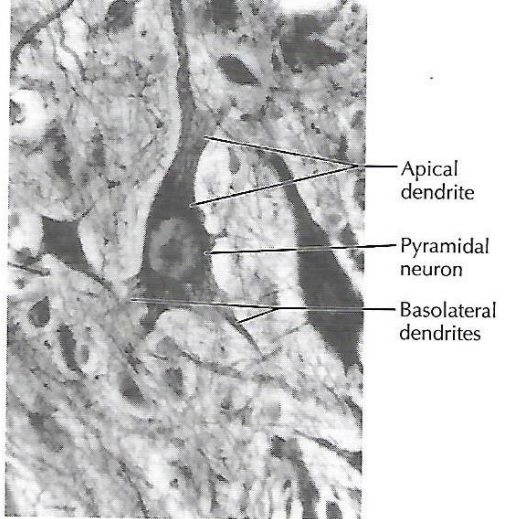


C. High magnification of dorsal root ganglion primary sensory neurons and axons. Cajal stain.

Central nervous system



Lower motor neurons in peripheral nervous system showing large cell bodies and extensive Nissl substance (endoplasmic reticulum). Cresyl violet stain.



Large pyramidal neuron in peripheral nervous system with a typical branching apical dendrite and multiple basolateral dendrites and their branches. Fiber stain.

Peripheral Nervous System